



# 플라스틱 도관용 Roxtec S 관통 장비

플라스틱 도관용 내화 관통 장비.

플라스틱 도관용 Roxtec S는 내화 등급이 필요한 구조물에 용접하기 위한 관통 장비입니다. 바닥 응용 분야에서 폐쇄되고 안전한 공간을 제공합니다. 직사각형 강철 프레임은 사용하면, 케이블 밀도가 높은 도관을 라우팅할 수 있습니다. 플라스틱 도관용 Roxtec RM PPS 셸링 모듈에는 설치를 단순화하기 위해 해당 NW 크기 번호가 표시되어 있습니다. RM PPS 모듈은 동일한 프레임에 도관과 케이블을 혼합하여 일반 RM 모듈과 결합할 수 있습니다.

- 유지 및 검사 용이
- 예비 공간 포함 제공



## 제품 특징점



내화



IP/UL NEMA

## 설치 구조



금속

## 장착 유형



용접

## 등급 및 인증

### 화재

- EN 45545 E60에 따른 E/티 등급

### 강도

- IP 66/67

## 프레임 치수

mm/kg

아래의 프레임 변화는 제한된 선택입니다. 프레임 및 구성의 전체 범위를 보려면 [roxtec.com](https://www.roxtec.com)을 방문하십시오.

구성	프레임 입구	모듈설치공간	외부 치수 WxHxD	홀 치수 w x h	무게	Art. 번호
S 6x1 ALU	1	120 x 180	140.5 x 238 x 60	143(+1/-1) x 240(+1/-1)	1.2	S006000000131
S 6x1 PRIMED	1	120 x 180	140.5 x 238 x 60	143(+1/-1) x 240(+1/-1)	3.3	S006000000112
S 6x1 AISI316	1	120 x 180	140.5 x 238 x 60	143(+1/-1) x 240(+1/-1)	3.3	S006000000121
S 6x2 PRIMED	2	120 x 180	271 x 238 x 60	273(+1/-1) x 240(+1/-1)	5.5	S006000000212
S 6x2 ALU	2	120 x 180	271 x 238 x 60	273(+1/-1) x 240(+1/-1)	1.9	S006000000231
S 6x2 AISI316	2	120 x 180	271 x 238 x 60	273(+1/-1) x 240(+1/-1)	5.5	S006000000221
S 6x3 PRIMED	3	120 x 180	401.5 x 238 x 60	404(+1/-1) x 240(+1/-1)	7.7	S006000000312
S 6x3 AISI316	3	120 x 180	401.5 x 238 x 60	404(+1/-1) x 240(+1/-1)	7.7	S006000000321
S 6x3 ALU	3	120 x 180	401.5 x 238 x 60	404(+1/-1) x 240(+1/-1)	2.6	S006000000331



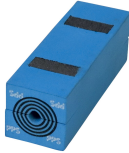
# 씰링 컴포넌트 데이터

## 씰링 컴포넌트

## 액세서리



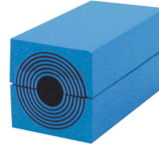
윤활제



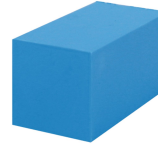
RM PPS 모듈( Multidiamete



Wedge 및 We



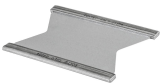
RM 모듈(Mult idiameter™



RM 솔리드 모듈



용접 도구



스태이플레이트

자세한 내용은 [roxtec.com](https://www.roxtec.com)을 방문하십시오.

The product information provided by Roxtec does not release the purchaser of the Roxtec system, or part thereof, from the obligation to independently determine the suitability of the products for the intended process, installation and/or use. Roxtec gives no guarantee for the Roxtec system or any part thereof and assumes no liability for any loss or damage whatsoever, whether direct, indirect, consequential, loss of profit or otherwise, occurred or caused by the Roxtec systems or installations containing components not manufactured by an authorized manufacturer and/or occurred or caused by the use of the Roxtec system in a manner or for an application other than for which the Roxtec system was designed or intended. Roxtec expressly excludes any implied warranties of merchantability and fitness for a particular purpose and all other express or implied representations and warranties provided by statute or common law. User determines suitability of the Roxtec system for intended use and assumes all risk and liability in connection therewith. In no event shall Roxtec be liable for indirect, consequential, punitive, special, exemplary or incidental damages or losses. The Roxtec products are offered and sold in accordance with the conditions of the Roxtec General Terms of Sales. The latest version of the Roxtec General Terms of Sales can be downloaded from <https://www.roxtec.com/en/about-us/about-roxtec/general-terms-of-sales/> We reserve the right to make changes to the product and technical information without further notice. Any errors in print or entry are no claims for indemnity. The content of this publication is the property of Roxtec International AB and is protected by copyright. This document was generated on: 2024-04-15